

NATIONAL
DESIGN
AWARDS
2024

ENTRY
GUIDE





Welcome

The Building Designers Association of Australia (BDAA) is thrilled to extend an invitation to you for the 2024 National Design Awards Program. This distinguished event stands as a testament to the remarkable achievements and the pinnacle of design excellence across Australia, marking this year as our most ambitious yet.

As our industry evolves at an unprecedented pace, driven by groundbreaking designs and a deepened commitment to sustainable solutions, the 2024 BDAA National Design Awards aims to serve as the premier platform for professionals like you to display your creativity, expertise, and unwavering dedication to design superiority.

We invite every eligible BDAA member to embrace this unparalleled opportunity to showcase your extraordinary work, gaining recognition from peers, clients, and the industry at large.

The awards not only pave the way for national acknowledgment but also promise extensive media visibility, enriched networking prospects, and avenues for new business ventures. Winners and participants will enjoy the spotlight in our esteemed “Winning Design” magazine, alongside opportunities to engage with fellow professionals and industry partners.

To facilitate your participation, we’ve prepared an updated Entry Guide, detailing all necessary eligibility requirements, submission guidelines, and crucial timelines. We encourage a thorough review of this guide and welcome any inquiries or requests for assistance directed to our Awards Coordinator.

As we gear up to witness your inspiring contributions and celebrate the extraordinary skill and passion within our design community, we encourage you not to miss this incredible chance to highlight your work and achieve the recognition you rightfully deserve at the 2024 BDAA National Design Awards.

Best wishes for an impactful and successful entry into this year’s competition!



Darren Evans

National President



Chris Knierim

CEO



NATIONAL DESIGN AWARDS 2024

Why Participate in the BDAA National Design Awards?

Gain Recognition and Prestige

Winning a BDAA National Design Award or being shortlisted as a finalist is a significant achievement that can enhance your professional reputation. Showcasing your award-winning projects demonstrates your commitment to design excellence and sets you apart from your peers.

Boost Your Career

Participating in the awards program can lead to increased visibility within the industry, opening doors to new job opportunities, clients, and collaborations. An award-winning project is a valuable addition to your professional portfolio, making you more attractive to potential employers and clients.

Expand Your Professional Network

The BDAA National Design Awards bring together industry professionals from various disciplines, providing a unique opportunity to expand your professional network, engage in meaningful conversations, and forge new partnerships.

Stay Ahead of Industry Trends

The awards program encourages participants to push the boundaries of their craft, keeping them informed about the latest trends and innovations in building design. By participating, you can gain valuable insights into cutting-edge design practices and stay ahead of the competition.

Showcase Your Commitment to Sustainability and Innovation

Participating in the BDAA National Design Awards allows you to highlight your dedication to sustainable and innovative design solutions. This can help raise public awareness of the importance of these principles and encourage the broader industry to adopt more sustainable practices.

Leverage Promotional and Marketing Opportunities

Award-winning projects often receive extensive media coverage and publicity, which can help raise your profile and attract new clients. Additionally, you can feature the award logo on your website, social media, and print materials, further promoting your success and enhancing your marketing efforts.



Preparing Your Submission

> Selecting the Appropriate Category

Choosing the right category for your project is crucial to ensure it is fairly evaluated and stands the best chance of winning. When selecting the appropriate category for your submission, consider the following tips:

- **Review** the detailed category descriptions provided in the Entry Guide, paying close attention to the specific criteria and requirements for each category
- **Consider** the unique aspects of your project that align with the category criteria, such as the building type, design features, sustainability measures, or collaboration efforts
- **Think** about the project's primary focus and how it best demonstrates your design expertise and innovative approach
- **Remember** that you can submit your project in multiple categories if appropriate, but each submission requires a separate entry and fee

> Media Opportunities

Winning a BDAA National Design Award can open up numerous media opportunities to promote your work and enhance your professional reputation. Some of the potential media opportunities include:

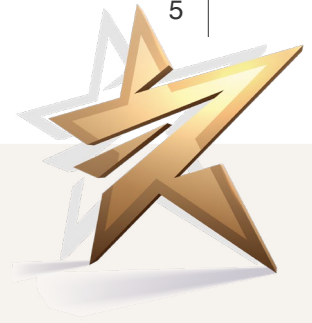
- **Inclusion** in the print and digital editions of the "Winning Design" magazine, featuring your winning project and an interview with you or your firm
- **Press releases** and articles in industry publications, blogs, and websites, highlighting your achievement and the merits of your project
- **Social media** coverage by BDAA and other industry influencers, showcasing your work to a wider audience
- **Opportunities** for speaking engagements, webinars, or panel discussions as an award-winning designer or architect

Leveraging these media opportunities can help you attract new clients, establish yourself as an industry leader, and further your career.

> Photography and Quality Images

High-quality images play a crucial role in showcasing your project to the judging panel and, if your entry is successful, to the wider industry and potential clients. Investing in professional photography is essential to capture the design details, aesthetics, and functionality of your project. When selecting images for your submission, consider the following tips:

- **Choose** images that highlight the key design elements and solutions in your project
- **Ensure** photographs are well-composed, well-lit, and have a high resolution (minimum 2400 pixels wide in any direction)
- **Include** a mix of interior and exterior shots, as well as close-ups and wider views, to provide a comprehensive visual representation of your project
- **Avoid** including any logos, watermarks, or identifying information on the images to maintain anonymity during judging



Video Content

In today's visually-driven world, video content is an increasingly powerful tool to showcase your project and tell its unique story. While not a requirement for entry or part of the judging criteria, incorporating video content in your submission can significantly enhance your project's presentation and amplify its marketing potential. Consider the following tips for creating compelling video content:

Capture the Journey: From site preparation to key handover and landscaping completion, document the various stages of your project's construction. This behind-the-scenes footage offers a fascinating glimpse into the design and building process, helping to create a more immersive experience for your audience.

Collaborate with your team: Encourage your construction team, subcontractors, and suppliers to capture photos and videos throughout the project's lifecycle. This collaborative approach ensures you have a diverse range of footage that highlights different aspects of the project and showcases the hard work and expertise of everyone involved.

Tell a Compelling Story: Use the collected video snippets to craft a captivating narrative that illustrates the project's evolution, from initial concept to final completion. This storytelling approach not only demonstrates your design expertise and problem-solving skills but also helps to evoke an emotional connection with your audience.

Leverage BDAA's Expertise: Once you've gathered your video content, the BDAA will help you transform it into a polished and engaging presentation. Our team will expertly edit and compile the footage, add music and voiceover, and create a professional, high-quality output that can be shared across various marketing channels.

By incorporating video content into your submission, you'll benefit from increased visibility and interest, helping to position your firm as an innovative and forward-thinking industry leader.

Entering the BDAA National Design Awards

There are four simple steps involved in submitting your entry.



> 1

REGISTER OR LOG IN

If you haven't already registered or submitted an entry for this year's program, you will need to register. This creates your account so you can make online project submissions, which you manage and may edit up until submissions close.

Once you have commenced your submission, you can log in and out at any time without losing submission data.

> 2

CHOOSE AWARD CATEGORY

There are thirty categories which each attract entry fees. Look at the category descriptions to select the most appropriate for your project. Projects may be entered into more than one category where appropriate (each entry requires a separate submission and fee).

> 3

CREATE ENTRY SUBMISSION

Before beginning your entry submission, read the entry conditions. Submitting an entry means that you have read and agreed to all the Entry Conditions, including obtaining appropriate releases and authorities in writing from your client, and photographer.

You will be prompted to respond to specific written criteria and upload supporting materials (images, drawings and other visual material). So that you have a back up, complete responses to written criteria in a Word document, then cut and paste into the relevant parts of the submission form.

Images. You must submit 10 to 20 images of your project in high resolution format. TIF images will not be accepted.

Images should be high resolution suitable for printing, but maximum file size shall be 10MB each. Minimum image size shall be 2400 pixels wide in any direction. If your images are coming in above the 10MB size limit, try re-saving them in Photoshop and reducing the JPEG compression level to 8.

To maintain anonymity during judging, no design practice names may appear on images, floor plans or written support materials; however, client names may be included.

> 4

ENTRY SUBMISSION AND PAYMENT

Once you have completed steps two and three you may pay and submit your project.

Early bird entry fees are \$245, \$185 or \$65 depending on the category till 30th June 2024.

Entry fees are \$295, \$225 or \$95 depending on the category till 31st July 2024.

Each submission and payment is confirmed by the issuing of a tax receipt, sent to your email address. Retain a copy for taxation purposes.

Preferred payment method is Visa and Mastercard.

Entries will be accepted until Wednesday 31st July 2024.
All entry submissions must be made online bdaa.awardsplatform.com



Categories 2024

Entries will be accepted until

Wednesday 31st July 2024

All entry submissions must be made online

bdaa.awardsplatform.com

Early Bird Entry fees
(prior to 30th June 2024)

Primary = \$245
Secondary = \$185
Tertiary = \$65

Entry fees
(prior to 31st July 2024)

Primary = \$295
Secondary = \$225
Tertiary = \$95

RESIDENTIAL BUILDINGS >



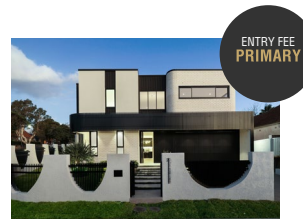
New Residential Buildings
(up to \$600,000)



New Residential Buildings
(\$601,000 to \$999,000)



New Residential Buildings
(\$1.0m to \$1.5m)



New Residential Buildings
(\$1.51m to \$1.99m)



New Residential Buildings
(\$2.0m to \$2.99m)



New Residential Buildings
(over \$3.0m)

Creating a brand-new home from scratch presents a unique blend of boundless creativity and the exhilaration of endless possibilities, while simultaneously challenging one with the vast array of choices and the necessity to make impeccable decisions. The New Residential Buildings category is thoughtfully segmented into six price tiers to highlight a wider array of your remarkable work in the domain of new home designs.

The judging criteria for these categories are comprehensive and encompass all facets of the project. This includes, but is not limited to, the interpretation of the client brief, aesthetic allure, design unity, documentation detail and sustainability considerations.

Categories 2024

RESIDENTIAL BUILDINGS >



ENTRY FEE
PRIMARY

Residential Alterations / Additions (up to \$500,000)

Undertaking a project with an existing dwelling can be a rewarding test of skill. It sets clear boundaries from the onset, enabling you to exercise your problem-solving prowess as you harmoniously blend elements of the old and new. This category is divided into three price ranges to exhibit a variety of renovation scales.

Assessment for this category will consider all project facets, including, but not limited to, adherence to the client brief, aesthetic charm, design consistency, and sustainability.



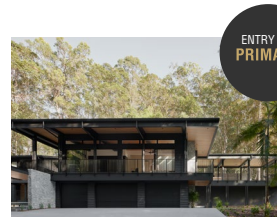
ENTRY FEE
PRIMARY

Residential Interiors



ENTRY FEE
PRIMARY

Residential Alterations / Additions (\$501,000 to \$999,00)



ENTRY FEE
PRIMARY

Residential Alterations / Additions (over \$1M)



ENTRY FEE
PRIMARY

Small Lot Housing (max. lot 350 sqm)

The adage “good things come in small packages” is the guiding principle of this category. It celebrates the innovative design solutions that make a compact site not only functional but also spacious, showcasing the ingenuity necessary to overcome size limitations. Judges will be looking for clever use of space, innovative design solutions, and functionality that defy the size limitations. The ability to create a sense of spaciousness and comfort within a smaller footprint will be particularly appreciated. Design elements that contribute to a home feeling larger and more open than the site would typically allow will be of key interest.



ENTRY FEE
PRIMARY

Secondary Dwellings / Granny Flats

Secondary dwellings, often known as granny flats, can present unique challenges in terms of space utilization and scope. This award category spotlights ingenious design approaches that transform these typically overlooked spaces into stand-out features of a property. Judges will be particularly interested in creative floor arrangements and design elements that elevate these compact dwellings beyond their traditional limitations, adding value and aesthetic appeal to the overall property.



ENTRY FEE
PRIMARY

Multi-Residential Buildings

This category recognizes the unique challenges and additional considerations involved in designing for multiple occupancy, predominantly in Class 2 buildings. Judges will be looking for ingenious design solutions that effectively accommodate the diverse needs and preferences of multiple occupants, while maintaining a cohesive and functional design.



Categories 2024

OTHER BUILDINGS >



ENTRY FEE
PRIMARY

Chris Reardon Memorial Award for Sustainable Buildings

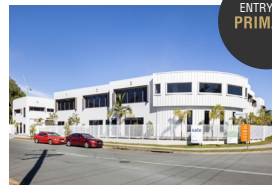
The late Dr Chris Reardon was a Licensed Builder, a Building Designer, a Sustainable Housing Consultant, a Public Speaker, Author, and Educator. He loved environmental design and dedicated his career to creating sustainable change in the Australian housing sector. Named in his honour, this award will be given to the most outstanding project in sustainable design. Open to any description, entrants can also enter this project into another appropriate category. New residential projects in this category require a NatHERS rating. NSW Residential Alterations/Additions may submit a BASIX certificate. Non-residential projects must submit a Section J certificate, NABERS, Green Star rating or similar as deemed appropriate.



ENTRY FEE
PRIMARY

Commercial Buildings

In the realm of commercial buildings, it is crucial to not only adhere to the project brief and uphold sound design principles but also to captivate the public with the building's aesthetic. Consideration must be given to branding and activating the building's location to create an engaging and appealing experience. This category primarily focuses on Class 5 and 6 buildings, where judges will assess how effectively the design achieves these objectives while maintaining functionality and design integrity.



ENTRY FEE
PRIMARY

Industrial Buildings

Designing for industrial spaces offers a rewarding opportunity to transform a workspace into something far more vibrant than a conventional warehouse. By incorporating sustainable elements and drawing inspiration from the surrounding environment, designers can create a unique building that is both functional and aesthetically appealing. This category primarily encompasses Class 7 and 8 buildings, where judges will evaluate how effectively the design embraces these principles to deliver a purpose-built space that harmonizes with its surroundings.



ENTRY FEE
PRIMARY

Public Buildings / Structures

Designing public buildings or structures presents a wonderful opportunity to make a positive impact on your community. This category is specifically tailored for Class 9 buildings, which encompass a diverse range of structures including council chambers, schools, medical centers, shopping plazas, and community halls, among others. Judges will evaluate how effectively the design enhances the community experience, promotes accessibility, and fulfills the unique requirements of the public space. By showcasing exemplary designs in this category, we can inspire others to create remarkable spaces that serve and uplift their communities.



ENTRY FEE
PRIMARY

Commercial Interiors

The significance of a cohesive interior is duly acknowledged within the Commercial Interiors category. This award will be assessed based on criteria such as spatial planning, material selection, and the colour palette employed in the interior design of commercial spaces. It is important to note that furnishings and decorations will not be considered during the judging process. However, their inclusion is highly recommended for public relations, marketing, and award presentation purposes, as they contribute to the overall presentation and impact of the design.



ENTRY FEE
PRIMARY

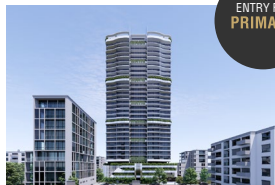
Heritage Buildings / Adaptive Re-use

Working on heritage buildings holds a unique allure. Though these projects are often complex and intricate, they have the potential to yield truly remarkable outcomes while preserving the rich tapestry of history. Judges in the Heritage Building category will be looking for designs that successfully balance the preservation of historical elements with innovative solutions that meet contemporary needs. They will carefully assess how effectively the project respects and enhances the original character and architectural integrity of the heritage building, all while accommodating modern functionality and sustainability considerations. The ability to harmoniously blend the old and the new, honouring the past while embracing the future, will be a key criterion in evaluating entries in this category.



Categories 2024

OTHER BUILDINGS >



ENTRY FEE
PRIMARY

Unbuilt Work

The “Unbuilt Works” category celebrates the unseen brilliance in architectural design that, due to various circumstances, has not been actualized into built structures. It highlights the creativity and innovation encapsulated in design documents for projects that did not transition to the construction phase. This category strictly excludes any projects that may proceed to construction in the future, underscoring the importance of designs that contribute to the industry’s innovative spirit, despite never being physically constructed.



ENTRY FEE
PRIMARY

Concept Design

The Concept Design category celebrates exceptional creativity and innovation in the early stages of architectural design. Participants are encouraged to think boldly, challenge conventions, and inspire future possibilities in architecture. Judges will evaluate entries based on creativity, clarity of the design concept, integration with context, feasibility, and visual presentation.



ENTRY FEE
PRIMARY

Liveable Housing Design

This category recognises residential projects that excel in creating inclusive living environments through accessible and adaptive design. Entries in this category can be standalone projects or part of another relevant category. Entries will be evaluated based on their integration of accessible/adaptive design principles, innovative solutions for overcoming architectural barriers, aesthetic appeal and functionality, ease of use and practicality, as well as their overall impact on improving the quality of life for residents.



ENTRY FEE
PRIMARY

Documentation Quality

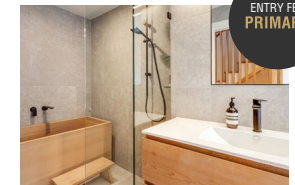
This category welcomes all project types that demonstrate exceptional documentation practices, placing a strong emphasis on the significance of clear and organized communication. This category recognizes that excellence in documentation goes beyond visual aesthetics and centres on the meticulous and comprehensive documentation of projects. It encompasses key elements such as precise construction drawings, comprehensive specification sheets, efficient revision management, and the inclusion of relevant engineering or manufacturer’s specifications. The primary objective of documentation is to facilitate effective communication, ensuring clear and concise understanding among clients, designers, suppliers, and builders while minimizing on-site interpretation.



ENTRY FEE
PRIMARY

Thermal Design Excellence Award

Thermal Performance Assessors, this is your moment to shine! In this open category, you have the opportunity to showcase your professional excellence in thermal design. Judges will be looking for solid evidence of how your meticulous efforts and expertise in improving thermal performance have made a significant impact on the project. They are particularly interested in seeing how the thermal performance improved from the initial designer’s drawing to the final drawing, highlighting the remarkable advancements achieved through your diligent assessment and implementation of thermal design strategies. Demonstrate your expertise and the tangible improvements you have made to enhance the building’s energy efficiency and overall thermal comfort.



ENTRY FEE
PRIMARY

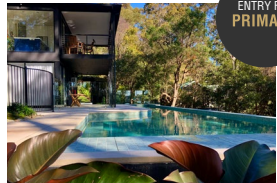
Passive House

The Passive House Award recognises outstanding achievements in the field of Passive House design. This award celebrates projects and individuals that demonstrate exceptional innovation, sustainability, energy efficiency, and occupant comfort within the Passive House standard. Eligible projects must be Passive House certified, meeting the stringent criteria and performance metrics set forth by the Passive House Institute. The judging process will involve a panel of experts in the field of Passive House design and construction, who will evaluate each project based on the above criteria. The winner of the Passive House Award will be recognised for their exceptional contributions to energy-efficient and sustainable building design within the certified Passive House standard.



Categories 2024

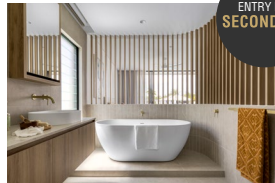
OTHER BUILDINGS >



ENTRY FEE
PRIMARY

Landscape Design

A magnificent building deserves an equally captivating landscape. The Landscape Design Excellence category acknowledges the expertise required to create functional and aesthetically pleasing outdoor spaces. Entries can be standalone landscape projects or part of a submission for another relevant category, emphasizing the integral role of landscape design in enhancing the overall project.



ENTRY FEE
SECONDARY

Bathroom Design

Great bathroom design demonstrates clear connection to the brief, to deliver upon a very personal outcome. Compliance is paramount, as is visual appearance and functionality. Entries can be standalone projects or form part of a submission for another appropriate category.



ENTRY FEE
SECONDARY

Kitchen Design

This category welcomes entries that showcase exceptional design and planning, demonstrating how the kitchen effectively fulfills the personal brief. Submissions can be standalone projects dedicated to kitchen design or part of a submission for another relevant category, highlighting the integral role of the kitchen within the overall project. Judges will evaluate the functionality, aesthetic appeal, craftsmanship, and integration with the overall project.



ENTRY FEE
SECONDARY

Open Project (up to \$100k)

If you have designed an exceptional small-scale project that doesn't quite fit into any other category, this is the perfect category for you. Whether it's an innovative mobile home or a pop-up retail location, this category recognizes outstanding design in bespoke areas. Showcase your creativity and unique solutions that push the boundaries of conventional design.



ENTRY FEE
TERTIARY

Student Design

The Student Design category provides an extraordinary opportunity for students in our industry to receive national recognition for their projects. Being acknowledged in this category is an exceptional accomplishment that adds immense value to your first resume, showcasing your creative talent and unwavering commitment to excellence. This category welcomes projects of any scale, whether they are former tertiary assessments or fresh concepts. Demonstrate your innovative ideas, display a deep understanding of design principles, exhibit meticulous attention to detail, and showcase your refined aesthetic sensibility. Seize this chance to pave the way for a promising future in the design field and make your mark in the industry.



Categories 2024

OTHER BUILDINGS >



Dual Occupancy

The Outstanding Dual Occupancy Project award celebrates projects that demonstrate innovative and successful designs for residential properties capable of accommodating two distinct occupancies within a single structure. This category honours projects that seamlessly integrate functionality, aesthetics, and sustainability, while providing an exceptional living experience for multiple occupants.

The judges are looking for projects that demonstrate imaginative and innovative design solutions for dual occupancy, evaluating the creativity and originality of architectural and interior design elements. They will also assess how effectively the project optimizes functionality and flexibility for both occupants, considering space utilisation efficiency, privacy, and adaptable design features. The judges prioritise projects that showcase exceptional design, meticulous attention to detail, and a harmonious integration of two living spaces, enhancing the overall liveability and desirability of the dual occupancy project.



Multi - Residential Buildings (over 3 storeys)

The high-rise Multi-Residential Building award recognises excellence in the design and construction of multi-residential buildings exceeding 3 storeys in height. This category celebrates projects that demonstrate innovative design, sustainable practices, and exceptional livability for residents. Judges will assess the architectural creativity, aesthetics, and overall design concept of the building.

They will also evaluate the sustainable features and practices incorporated into the building's design and construction, including energy efficiency, use of sustainable materials, and environmental impact. Additionally, judges will consider the functionality of the building layout and the quality and variety of amenities provided for residents. The impact of the building on the surrounding community, as well as the quality of construction and attention to detail in the project's execution, will also be assessed.



Multi - Residential Buildings (up to 3 storeys)

The low-rise Multi-Residential Building award celebrates excellence in the design and construction of multi-residential buildings up to 3 storeys in height. This category recognises projects that prioritise innovative design, sustainability, and a high standard of living for residents.

Judges will evaluate the architectural creativity, aesthetics, and overall design concept of the building. They will also assess the incorporation of sustainable features and practices, such as energy-efficient design and use of environmentally friendly materials. Additionally, judges will consider the functionality of the building layout, the quality of living spaces, and the provision of amenities for residents. The integration of the building with and its enhancement of the surrounding community will also be evaluated, as well as the quality of construction and attention to detail in the project's execution.





Written Criteria

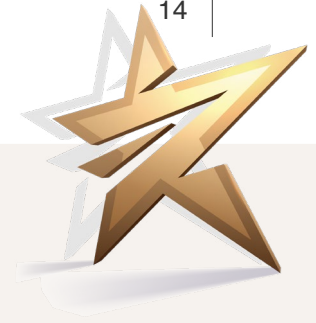
The written criteria provide an opportunity to showcase your project's strengths and your unique design approach. Make sure to highlight your accomplishments and address each requirement in a concise, engaging manner.

Design Brief: In this section, set the stage for your project by detailing the client's requirements and explaining the significance of the brief. Focus on the challenges you faced and how you tackled them to create a compelling narrative. Remember, the more our judges understand the brief, the more they can appreciate your solutions.

Design Solution: This section is your opportunity to shine! Describe how you met or exceeded the client's brief, resolved any issues, and overcame challenges. Highlight the products you chose, why you chose them, and how they improved the project. Be confident in showcasing your skills and the value you brought to the project.

Entrant Biography: Share your professional journey, achievements, and unique qualities in this section. Though not part of the judging process, this information helps with promotion and marketing efforts. Present yourself and your company in a conversational tone, focusing on the aspects you want people to know and remember.

Media Release Information: Use this section to showcase your business's strengths and values. Craft a statement that reflects your brand's essence and can be attached to your project's images. Make sure this message conveys the image you want your future clients and the general public to see.



NATIONAL DESIGN AWARDS 2024

Industry Partner Awards

The BDAA National Design Awards program offers an exciting opportunity for entrants to gain additional recognition and exposure by participating in the Industry Partner Awards. By showcasing the use of our Industry Partners' products in your project, you can unlock bonus entries at no extra cost while strengthening your professional relationships with these partners.

Entering Industry Partner Awards

To participate in the Industry Partner Awards, follow these steps:

- Identify the award categories you wish to enter and ensure that your project features products from one or more of our Industry Partners.
- During the submission process, select the relevant Industry Partners whose products have been specified in your project.
- There is no additional monetary fee for entering the Industry Partner Awards, but you must provide sufficient photographic evidence of the specified products in use.

Capturing Partner Products in Your Submission

To successfully showcase the Industry Partner products in your project, consider the following tips:

Focus on the Product: Capture a portrait-oriented image that highlights the partner product in the context of your design. Ensure that the product is easily identifiable and visually appealing.

Showcase the Benefits: When including the product in your submission, explain how it contributes to the success of your project, whether through aesthetics, functionality, sustainability, or other benefits.

Cross-Promotion: By featuring the Industry Partner products in your submission, you not only increase your chances of winning an award but also create opportunities for cross-promotion with the partner. This collaborative approach can lead to increased visibility and recognition for both parties.

By participating in the Industry Partner Awards, you can enhance your submission, strengthen your professional relationships, and gain additional recognition within the industry. Don't miss this valuable opportunity to showcase your expertise and collaboration with leading Industry Partners.



Conditions

Eligibility

The awards are only open to BDAA members holding the following categories of membership: Chartered, Full & Student. Please note that, Associate and Practice members are not eligible to enter the National Design Awards. To qualify as a Member of the Association, all membership fees must be paid when due.

Being accredited with the BDAA is not the same as being a BDAA member. If you have any doubts about your membership status contact BDAA Head Office or the Awards Coordinator.

The awards are also open to Australian Building Sustainability Association (ABSA) members holding the category of membership of Accredited Assessor. ABSA members are eligible to enter the Collaboration Award and the Thermal Design Excellence Award, but are not eligible to enter the other categories related to building design.

An Entrant must be an eligible Member of the Association at the time of the final closing date for entries, and for the current Membership year in which the Design Awards are to be judged and presented.

The Entrant must be the primary author and coordinator of the design i.e. the majority stakeholder.

Where authorship and coordination of the design cannot be attributed to an individual member, joint entrants will be permitted if all parties comply with the eligibility criteria in full, including membership of the Association.

Joint entrants other than members of the Association are not permitted. Please contact the Awards Coordinator if you are considering joint entry, as the platform is setup to accept a single individual entrant only.

Projects constructed in Australia or overseas are eligible

Construction of the project (the building / structural elements) must have been fully completed not more than 5 years before the final closing date for entries.

This requirement does not apply to the Student Design, Unbuilt Work, Unbuilt Work (Concept Design) or Documentation Quality categories.

For the Student Design categories, the Entrant must have been enrolled in an industry related course, either full time or part time, on the completion date of the project.

A project entered in a previous BDAA National Design Awards competition IS NOT eligible for entry in the same category.

A project entered in a previous BDAA Chapter Design Awards competition IS eligible for entry in the same category in the National Design Awards competition.

A project entered in a previous BDAA National Design Awards competition IS NOT eligible for entry in the same category in a subsequent Chapter Design Awards competition.

General Conditions

An entry shall be excluded from the program:

1. if it is received after the advertised closing date (although submissions that have been commenced but not completed by the closing date may be included at the discretion of the Organiser).
2. if it does not fulfil these entry conditions.
3. if it is incomplete or doesn't conform to the correct format as specified under Entry (above).

The Organiser is committed to providing a quality awards program to the design industry and makes every attempt to ensure accuracy, currency and reliability of the information included on in this document and elsewhere. However, changes in content and process may become necessary at the absolute discretion of the Organiser. The Organiser accepts no liability for any use of the said content or reliance placed upon it.



Industry Partners

Local and national partners

PRINCIPAL INDUSTRY PARTNER



MAJOR INDUSTRY PARTNERS



PREMIUM INDUSTRY PARTNERS



PROFESSIONAL INDUSTRY PARTNERS



CORPORATE INDUSTRY PARTNERS



BUSINESS INDUSTRY PARTNERS





NATIONAL DESIGN AWARDS 2024

All entry submissions must be made online

bdaa.awardsplatform.com

Timeline 2024

31st July

Entry submissions are accepted until 5pm (AEST) on Wednesday 30th July 2024. Early bird submissions are accepted until 5pm (AEST) on Sunday 30th June 2024.

November

Awards and commendations will be presented during the BDAA National Design Awards presentation in Hobart in November 2024.

November

A full report of all winners will be released to the media, published in **Winning Design** and online at the BDAA Awards gallery.



NATIONAL DESIGN AWARDS 2024

Enquiries

designawards@bdaa.com.au